

STAGE LIGHTING SYSTEM

LIGHTS AND RIGS

EKSA[®]
LIGHTING
TECHNOLOGIES PVT LTD

 MAKE IN INDIA 





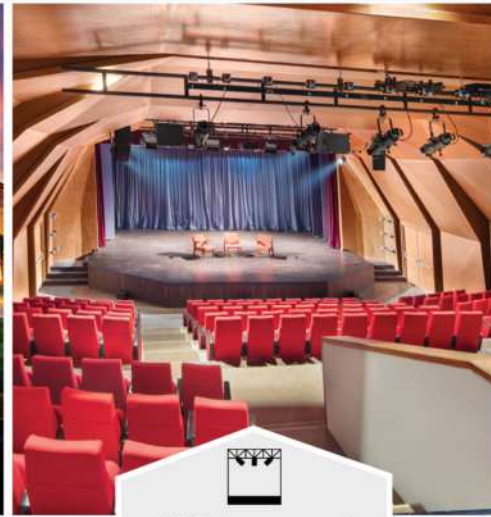
OUR VERTICALS




**ARCHITECTURAL
FAÇADE**




**ARCHITECTURAL
LANDSCAPE**




**AUDITORIUM /
STAGE LIGHTING**




STUDIO LIGHTING




FILM LIGHTING




GENERAL LIGHTING




DJ & PUB LIGHTING




**STREET /
CONFERENCE / STADIUM
LIGHTING**

AWARDS AND RECOGNITIONS



Fastest Growing Indian Brand, Dubai



Excellence in Manufacturing and Customer Satisfaction, Thailand



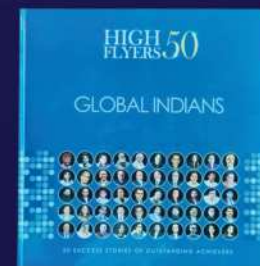
Nominated BEST 5000 MSME's Award



Awarded "10 Best Electronics Startups 2023" recognized by Siliconindia Magazine



Most Trusted Company Award For Excellence in Lighting Equipment's Manufacturer on the occasion of "Outstanding contributions to National Development - Atmanirbhar Bharat"



Highflyers 50 Global Indians Award for Outstanding Achievers to our Executive Director Mr. Ronald Silvan Dsouza



Awarded as the Emerging Brand in Lighting from Times Group - Economic Times of India

About Us & Content

LEKSA Lighting Technologies Pvt Ltd., was started with the vision to create an admirable company, focusing on Manufacturing and providing total lighting solutions in specialised lighting as per International Standards. A Team of experienced professionals working together by focusing on Lighting excellence, providing customer satisfaction with continuous improvement and provide turnkey solutions. Our skilled and talented Research and Development Team is always ahead of time to give our customers an excellent innovative products and solutions.

We are awarded "Fastest Growing Indian Company Excellence Award" in June 2019 and "Manufacturing Excellence & Customer Satisfaction Award" in December 2019. We have been Nominated for "Best 5000 MSME Award" under Government of India. Crowned Most Trusted Company Award For Excellence in Lighting Equipment's Manufacturer on occasion of National Seminar on "Outstanding Contributions to National Development 2022 - ATMANIRBHAR BHARAT". Crowned "High Flyers 50 Global Indians Award". Leksa Lighting is a pioneer in introducing Green Technology with 100% LED Lighting solution for Fiction Shoot in India. We are here to cater to our clientele's specific lighting requirement. Please do not hesitate to visit us for more information through our website www.leksalighting.com. You can get in touch with us on +91 7899543210.

Sl. no.	Description	Pg. No.	Sl. no.	Description	Pg. No.
1	LED Fresnel Spot	1 to 2	16	LED IP RGB Par	23
2	LED Profile Spot	3 to 4	17	Fixed Pipe Grid	24
3	LED Blinder	5 to 6	18	Fixed Lighting Bar	25
4	LED Parcan	7 to 8	19	Motorised Lighting Bar	26
5	LED Leksun Par	9 to 10	20	Teleclimber	27
6	LED Par RGB	11 to 12	21	Stage Side Wings	28
7	LED CYC Wash	13 to 14	22	Stage Side Ladders	29
8	LED Moving Head	15	23	Suspenders and C Tracks	30
9	Sharpy 7R to 15R	16	24	Manual Curtain Track	31
10	RGB Laser	17	25	Motorised Curtain Track	32
11	Halogen Lights	18	26	Draperies	33 to 34
12	LED IP Profile	19	27	Stands, Clamps & Grips	35
13	LED IP Moving Head	20	28	Network Controller	36
14	LED IP Parcan	21	29	Splitter, JB's, AMB & PMB	37
15	LED IP Blinder	22	30	Panels	38



LED FRESNEL SPOT

Specifications :

Source	: LED
Color (CCT)	: 3200K/5600K/Bi Color
CRI	: 95+
TLCI	: 95+
R9	: 90+
Protection Rating	: IP20
Control	: DMX 512
Channels	: 1/3 channel
Beam Angle	: 10°-40° & 10°-50°
Housing	: MS & Extruded Al
Body Color	: Black / Custom
Accessories	: O Clamp, Safety Bond, Power Cord, Barn Door, Gel frame



LED FRESNEL 100W



LED FRESNEL 200W



LED FRESNEL 300W



LED FRESNEL 450W

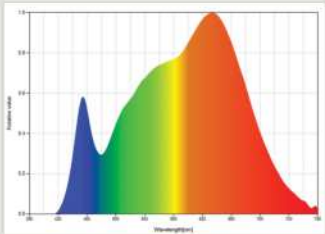
Available models

- | | | | |
|-------------|--------|-------------|--------|
| • LK F100T | : 100W | • LK F300D | : 300W |
| • LK F100D | : 100W | • LK F300BC | : 300W |
| • LK F100BC | : 100W | • LK F450T | : 450W |
| • LK F200T | : 200W | • LK F450D | : 450W |
| • LK F200D | : 200W | | |
| • LK F200BC | : 200W | | |
| • LK F300T | : 300W | | |

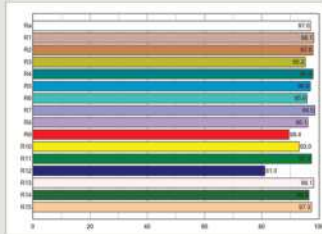
Accessories



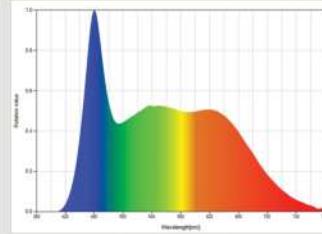
Spectrums and histograms



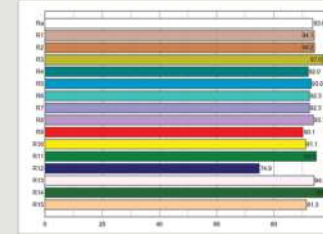
RGB - 3200K



R1- R15 : 3200K



RGB - 5600K



R1- R15 : 5600K

Photometric data

100W FRESNEL SPOT

1 FC = 10.8 Lux Output in Lux

Distance in Mtrs	2M	4M	6M	8M	10M
Intensity in Lux 5600K (10°)	20800	5200	2312	1301	833
Intensity in Lux 5600K (40°)	5220	1305	580	327	210
Intensity in Lux 3200K (10°)	18780	4695	2087	1174	752
Intensity in Lux 3200K (40°)	4640	1160	516	291	187

10° - 40°

200W FRESNEL SPOT

1 FC = 10.8 Lux Output in Lux

Distance in Mtrs	2M	4M	6M	8M	10M
Intensity in Lux 5600K (10°)	40850	10213	4540	2554	1635
Intensity in Lux 5600K (40°)	10150	2538	1128	635	407
Intensity in Lux 3200K (10°)	37220	9305	4136	2327	1490
Intensity in Lux 3200K (40°)	9655	2414	1073	604	387

10° - 40°

300W FRESNEL SPOT

1 FC = 10.8 Lux Output in Lux

Distance in Mtrs	2M	4M	6M	8M	10M
Intensity in Lux 5600K (15°)	47563	11891	5285	2973	1903
Intensity in Lux 5600K (55°)	4945	1237	550	310	199
Intensity in Lux 3200K (15°)	45670	11418	5075	2855	1828
Intensity in Lux 3200K (55°)	4464	1116	496	279	179

15° - 55°



LED PROFILE SPOT

Specifications :

Source	: LED
Color (CCT)	: 3200K/5600K/RGBW/RGBWAL
CRI	: 95+
TLCI	: 95+
R9	: 90+
Protection Rating	: IP20
Control	: DMX 512
Channels	: 1/3 & 4/6/10 CH
Beam Angle	: 05°, 14°, 19°, 26°, 36°, 50° & 15°-38°
Housing	: MS & Extruded Al
Input	: AC 110-250V, 50/60Hz
body Color	: Black/Custom
Lamp Life	: 50,000 Hours
Accessories	: O Clamp, Safety Bond, Power Cord, Barn Door, Gel frame



20W MINI PROFILE



80W ZOOM PROFILE



200W LED PROFILE



300W LED PROFILE



200W LED ZOOM PROFILE



300W LED ZOOM PROFILE

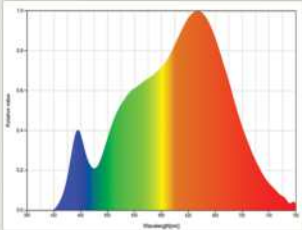
Available models

- LK Mini PRO 20 T/D : 20W
- LK ZPRO 80T : 80W
- LK PRO 205 T/D : 200W
- LK PRO 214 T/D : 200W
- LK PRO 219 T/D : 200W
- LK PRO 226 T/D : 200W
- LK PRO 236 T/D : 200W
- LK PRO 250 T/D : 200W
- LK ZPRO 200 T/D : 200W
- LK PRO 200 RGBW : 200W
- LK PRO 300 T/D : 300W
- LK PRO 314 T/D : 300W
- LK PRO 319 T/D : 300W
- LK PRO 326 T/D : 300W
- LK PRO 336 T/D : 300W
- LK PRO 350 T/D : 300W
- LK ZPRO 300 T/D : 300W
- LK ZPRO 300 RGBW : 300W
- LK ZPRO 300 RGBWAL: 300W

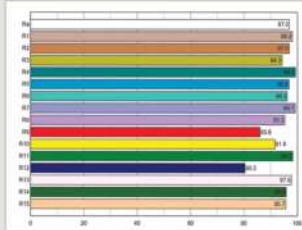
Accessories



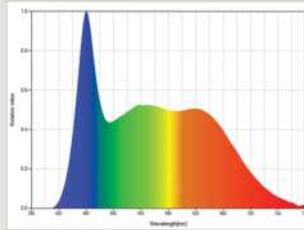
Spectrums and histograms



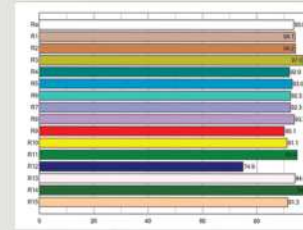
RGB - 3200K



R1- R15 : 3200K



RGB - 5600K



R1- R15 : 5600K

Photometric data

LED PROFILE SPOT 200W		1 FC = 10.8 Lux				
Distance in Mtrs	3M	6M	9M	12M	15M	
Intensity in Lux 5600K (05°)	51252	12813	5695	3204	2051	
Intensity in Lux 5600K (14°)	17891	4473	1988	1119	717	
Intensity in Lux 5600K (19°)	12452	3113	1384	779	499	
Intensity in Lux 5600K (26°)	8695	2174	967	544	349	
Intensity in Lux 5600K (36°)	5902	1476	656	369	237	
Intensity in Lux 5600K (50°)	3582	896	399	225	144	

LED PROFILE SPOT 300W		1 FC = 10.8 Lux				
Distance in Mtrs	3M	6M	9M	12M	15M	
Intensity in Lux 5600K (05°)	64052	16013	7117	4004	2563	
Intensity in Lux 5600K (14°)	22485	5622	2499	1406	900	
Intensity in Lux 5600K (19°)	16282	4071	1810	1019	653	
Intensity in Lux 5600K (26°)	11022	2756	1225	690	442	
Intensity in Lux 5600K (36°)	7721	1931	859	484	310	
Intensity in Lux 5600K (50°)	4651	1163	517	291	187	



LED BLINDER

Specifications :

Source	: LED
Color (CCT)	: 3200K/5600K/RGBW
CRI	: 95+
TLCI	: 95+
R9	: 90+
Protection Rating	: IP20
Control	: DMX 512
Channels	: 2/6 & 4/8 CH
Beam Angle	: 30°
Housing	: MS & Extruded Al
Input	: AC 110-250V, 50/60Hz
body Color	: Black/Custom
Lamp Life	: 50,000 Hours
Accessories	: O Clamp, Safety Bond, Power Cord



LED BLINDER 200W



LED BLINDER 400W

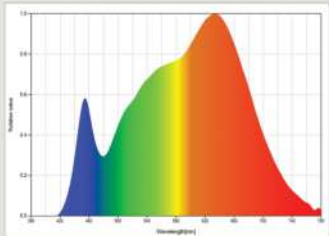
Available models

- LK BLDR 2100T : 200W
- LK BLDR 2100D : 200W
- LK BLDR 2100 RGBW : 200W
- LK BLDR 4100T : 400W
- LK BLDR 4100D : 400W
- LK BLDR 4100 RGBW : 400W

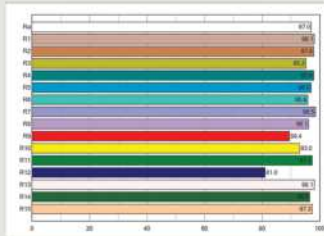
Accessories



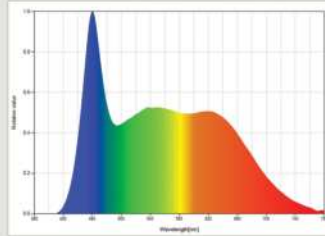
Spectrums and histograms



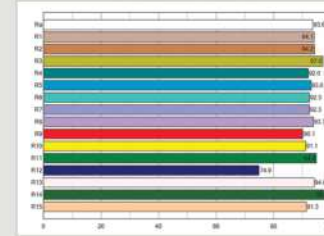
RGB - 3200K



R1- R15 : 3200K



RGB - 5600K



R1- R15 : 5600K

Photometric data

BLINDER 200W		1 FC = 10.8 Lux				
Distance in Mtrs	2M	4M	6M	8M	10M	
Intensity in Lux 3200K (30°)	3122	781	348	196	126	
Intensity in Lux 5600K (30°)	3278	820	365	206	132	

BLINDER 400W		1 FC = 10.8 Lux				
Distance in Mtrs	2M	4M	6M	8M	10M	
Intensity in Lux 3200K (30°)	10682	2671	1188	669	429	
Intensity in Lux 5600K (30°)	11245	2812	1250	704	451	



LED PARCAN

Specifications :

Source	: LED
Color (CCT)	: 3200K/5600K/RGBW
CRI	: 95+
TLCI	: 95+
R9	: 90+
Protection Rating	: IP20
Control	: DMX 512
Channels	: 1/3/5 CH
Beam Angle	: 11°-35° & 14°-45°
Housing	: MS & Extruded Al
Input	: AC 110-250V, 50/60Hz
body Color	: Black/Custom
Lamp Life	: 50,000 Hours
Accessories	: O Clamp, Safety Bond, Gel Frame, Power Cord



PARCAN 100W



PARCAN 120W



PARCAN 150W



PARCAN 200W



PLANO CONVEX 200W

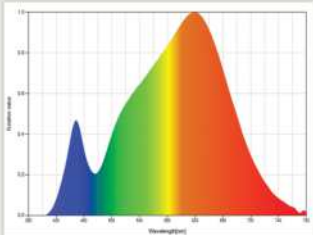
Available models

- LK PARCAN 100T : 100W
- LK PARCAN 100D : 100W
- LK PARCAN 120 RGBW : 120W
- LK PARCAN 150T : 150W
- LK PARCAN 150D : 150W
- LK PARCAN 200T : 200W
- LK PARCAN 200D : 200W
- LK PC 200 : 200W

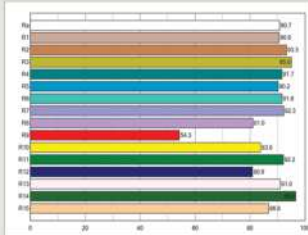
Accessories



Spectrums and histograms

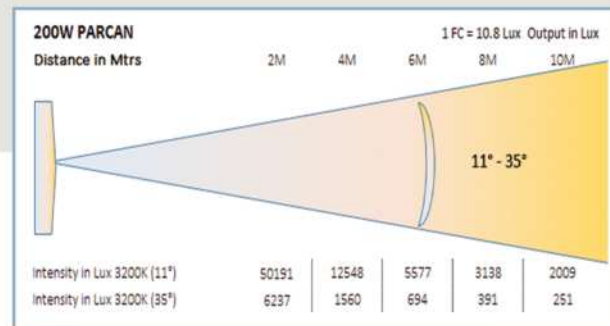
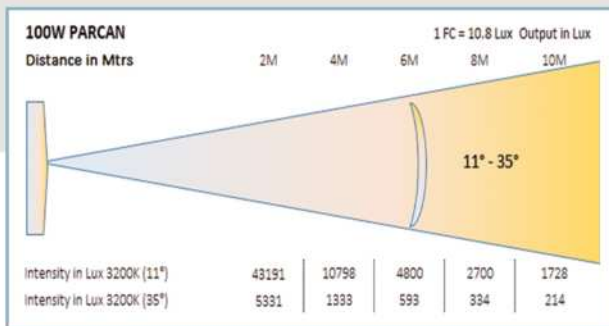


RGB - 3200K



R1- R15 : 3200K

Photometric data





LED LEKSUN PAR

Specifications :

Source	: LED
Color (CCT)	: 3200K/5600K/Bi Color
CRI	: 95+
TLCI	: 95+
R9	: 90+
Protection Rating	: IP20
Control	: DMX 512
Channels	: 1/2/6 CH
Beam Angle	: 15°, 25°, 45°, 60°, 120°
Housing	: MS & Die Casted Al
Input	: AC 110-250V, 50/60Hz
body Color	: Black/Custom
Lamp Life	: 50,000 Hours
Accessories	: Barn Door, O Clamp, Safety Bond, Power Cord



LEKSUN PAR 54X3 D



LEKSUN PAR 54X3 T



LEKSUN PAR 54X3 BC



LEKSUN COB PAR



LEKSUN FRESNEL PAR

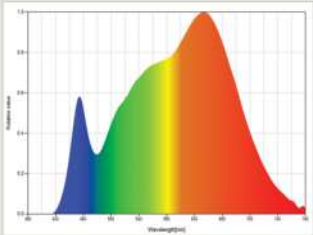
Available models

- LEKSUN F100 T/D : 100W
- LEKSUN F100 BC : 100W
- LEKSUN COB 100T/D : 100W
- LEKSUN COB 100BC : 100W
- LEKSUN 543T/D : 180W
- LEKSUN 543BC : 180W

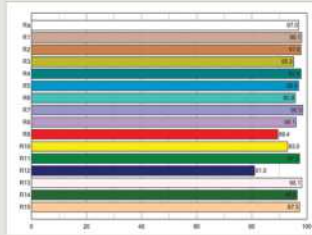
Accessories



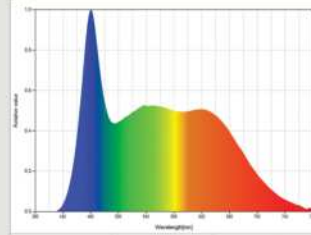
Spectrums and histograms



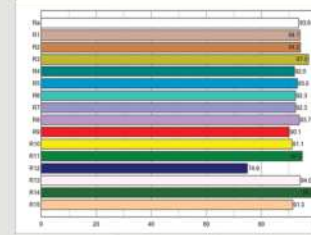
RGB - 3200K



R1- R15 : 3200K



RGB - 5600K



R1- R15 : 5600K

Photometric data

LEKSUN COB PAR 100W & 200W 1 FC = 10.8 Lux

Distance in Mtrs	2M	4M	6M	8M	10M
Intensity in Lux 3200K (100W)	1344	336	150	85	55
Intensity in Lux 5600K (100W)	1428	357	159	90	58
Intensity in Lux 3200K (200W)	2910	728	324	183	118
Intensity in Lux 5600K (200W)	3142	786	350	197	127

110°

LEKSUN FRESNEL COB PAR 100W & 200W 1 FC = 10.8 Lux

Distance in Mtrs	2M	4M	6M	8M	10M
Intensity in Lux 3200K (100W)	6917	1730	769	433	278
Intensity in Lux 5600K (100W)	7471	1868	831	468	300
Intensity in Lux 3200K (200W)	14525	3632	1615	909	582
Intensity in Lux 5600K (200W)	15687	3922	1744	981	628

60°

LEKSUN 54X3 LED PAR 1 FC = 10.8 Lux

Distance in Mtrs	2M	4M	6M	8M	10M
Intensity in Lux 3200K (25°)	8103	2026	901	507	325
Intensity in Lux 5600K (25°)	8829	2208	982	553	354

25°



LED LEKSUN PAR RGBW

Specifications :

- Source : LED
- Color (CCT) : RGBW, RGB 3in1, RGBW 4in1, RGBWA 5in1
- Protection Rating : IP20
- Control : Manual / DMX 512
- Channels : 7/8/9 CH
- Beam Angle : 15°, 25°, 45°
- Housing : MS & Die Casted Al
- Input : AC 110-250V, 50/60Hz
- body Color : Black/Custom
- Lamp Life : 50,000 Hours
- Accessories : Barn Door, O Clamp, Safety Bond, Power Cord



LEKSUN G1



LEKSUN G2



LEKSUN G3



LEKSUN G4



LEKSUN G+



LEKSUN 12x10



LEKSUN 18x10

Available models

- LEKSUN G1 : 180W
- LEKSUN G2 : 120W
- LEKSUN G3 : 120W
- LEKSUN G+ : 180W
- LEKSUN 12x10 : 120W
- LEKSUN 18x10 : 180W



REAR VIEW



SIDE VIEW



FRONT VIEW



SMD LED



120 / 180W



RGB / RGBW / RGBWA



15°, 25°, 45°



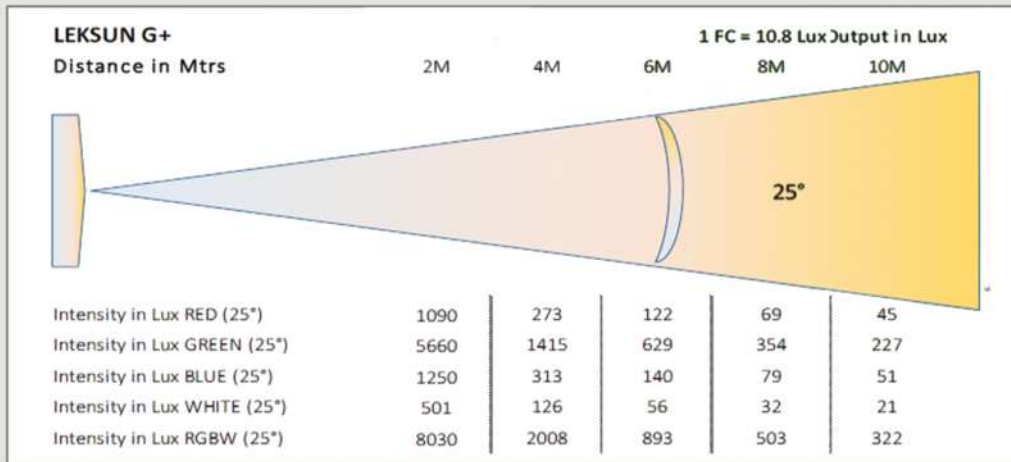
DMX 512



7/8/9 CH



Spectrums and Histograms



Accessories



LED CYC WASH

Specifications :

Source	: LED
Color (CCT)	: 3000K-7000K, RGB+WW
Protection Rating	: IP20
CRI	: 90+
TLCI	: 90+
R9	: 90+
Control	: DMX 512
Channels	: 14 CH
Beam Angle	: 60°
Housing	: MS & Die Casted Al
Input	: AC 110-250V, 50/60Hz
body Color	: Black/Custom
Lamp Life	: 50,000 Hours
Accessories	: Barn Door, O Clamp, Safety Bond, Power Cord



LED CYC Wash 300W

Available models

- LK CYC 300 CCT : 300W

Additional details

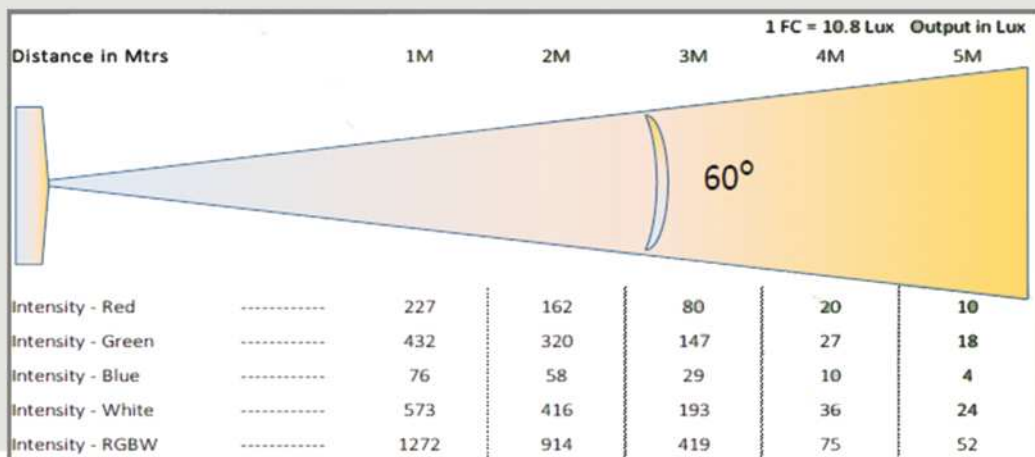


REAR VIEW



SIDE VIEW

Photometric data



Accessories





LED MOVING HEAD

Specifications :

Source	: LED
Color (CCT)	: 6500K
Protection Rating	: IP20
Wattage	: 150W/200W/350W/400W
Control	: DMX 512
Channels	: 16~24 CH
Beam Angle	: 3°~35°
Input	: AC 110-250V, 50/60Hz
body Color	: Black
Gobo Wheel	: 3~14 Gobos
Prism	: 8~24 Facet prisms
Pan & Tilt	: Pan 540°, Tilt 270° (16bit)
Strobe	: 13 times / Sec.
Accessories	: O Clamp, Safety Bond, Power Cord



150W MOVING HEAD SPOT



200W SPOT MOVING HEAD



19X15W MOVING HEAD WASH



350W BSW MOVING HEAD



400W BSW MOVING HEAD



SHARPY 7R TO 15R

Specifications :

Source	: HID Discharge Lamp
Color (CCT)	: 8000K
Protection Rating	: IP20
Wattage	: 230W/280W/350W
Control	: DMX 512
Channels	: 16~24 CH
Beam Angle	: 3°~35°
Housing	: MS, Extruded AL, Hard Fiber
Input	: AC 110-250V, 50/60Hz
body Color	: Black
Color Wheel	: 14 diachronic Filters + Open
Gobo Wheel	: 17 Gobos + Open
Prism	: 8~24 Facet prisms
Pan & Tilt	: Pan 540°, Tilt 270° (16bit)
Strobe	: 13 times / Sec.
Accessories	: O Clamp, Safety Bond, Power Cord



Accessories



MOVING HEAD 7R



MOVING HEAD 10R



MOVING HEAD 12R



MOVING HEAD 15R



RGB LASER

Specifications :

Source	: LED/ Laser
Color (CCT)	: RGB
Protection Rating	: IP20
Wattage	: 2W
Control	: DMX Control
Channels	: 33 CH
Beam Angle	: 40°
Housing	: Hard Fibre
Input	: AC 100-240V, 50/60Hz
body Color	: Black
Pan & Tilt	: Pan 540°, Tilt 270° (16bit)
RGB Laser	: Red 400MW Green 500MW Blue 1200MW
Lamp Life	: 50,000 Hours
Accessories	: DMX Cable, Power cable, Clamp, Safety Bond for fixing etc.



RGB BOX TYPE ANIMATION LASER



RGB MOVING HEAD ANIMATION LASER



HALOGEN LIGHTS



HALOGEN PARCAN



HALOGEN FLOOD



HALOGEN MULTI



HALOGEN MULTI



HALOGEN PLANO CONVEX



HALOGEN PROFILE SPOT

LED IP PROFILE

Specifications :

Source	: LED
Power Supply	: AC 100-240V, 50/60Hz
Power Consumption	: 300W
Display	: LCD display
Control Mode	: DMX 512
Beam Angle	: 19° / 26° / 36°
CRI	: 95+
TLCI	: 95+
DMX	: 2/6 CH
Stroboscopic	: 1-20/S
Dimming	: 0-100% Linear Dimming
Protection rate	: IP65/66
Housing	: Cast Aluminium
Accessories	: O Clamp, Safety Bond, Gobo Holder, Gobos, Irish, Power Cord



Accessories



WATERPROOF PROFILE



LED IP MOVING HEAD

Specifications :

Source	: LED
Color (CCT)	: 6500K
Protection Rating	: IP65/66
Wattage	: 450W
Control	: DMX 512
Channels	: 16~24 CH
Beam Angle	: 7.5°~46°
Input	: AC 110-250V, 50/60Hz
Body Color	: Black
Gobo Wheel	: 13 Gobos
Pattern Plate	: 7 Pattern
Pan & Tilt	: Pan 540°, Tilt 270° (16bit)
Strobe	: 1-32HZ strobe, adjustable strobe speed
Accessories	: O Clamp, Safety Bond, Power Cord



Accessories



WATERPROOF MOVING HEAD



LED IP PARCAN

Specifications :

Source	: LED
Color (CCT)	: 3200K/5600K/RGBW
CRI	: 95+
TLCI	: 95+
R9	: 90+
Protection Rating	: IP65/66
Control	: DMX 512
Channels	: 2/6 CH
Beam Angle	: 6°-60°
Housing	: MS & Extruded Al
Input	: AC 110-250V, 50/60Hz
body Color	: Black
Lamp Life	: 50,000 Hours
Accessories	: O Clamp, Safety Bond, Power Cord



Accessories



WATERPROOF PARCAN



LED IP BLINDER

Specifications :

Source	: LED
Color (CCT)	: 3200K/5600K/RGBW
CRI	: 95+
TLCI	: 95+
R9	: 90+
Protection Rating	: IP65/66
Control	: DMX 512
Electronic Dimming	: 0-100% linear dimming
Channels	: 4/8 CH
Beam Angle	: 60°
Housing	: MS & Extruded Al
Input	: AC 110-250V, 50/60Hz
body Color	: Black/Custom
Lamp Life	: 50,000 Hours
Accessories	: O Clamp, Safety Bond, Power Cord



Accessories



WATERPROOF BLINDER



LED IP RGB PAR

Specifications :

Source	: LED
Color (CCT)	: RGB
Protection Rating	: IP65/66
Wattage	: 180W
Control	: Manual / DMX 512
Channels	: 3/7 CH
Beam Angle	: 25°
Housing	: Aluminum alloy die-casting
Input	: AC 100-240V, 50/60Hz
body Color	: Black
Lamp Life	: 50,000 Hours
	O Clamp, Safety Bond, Power Cord



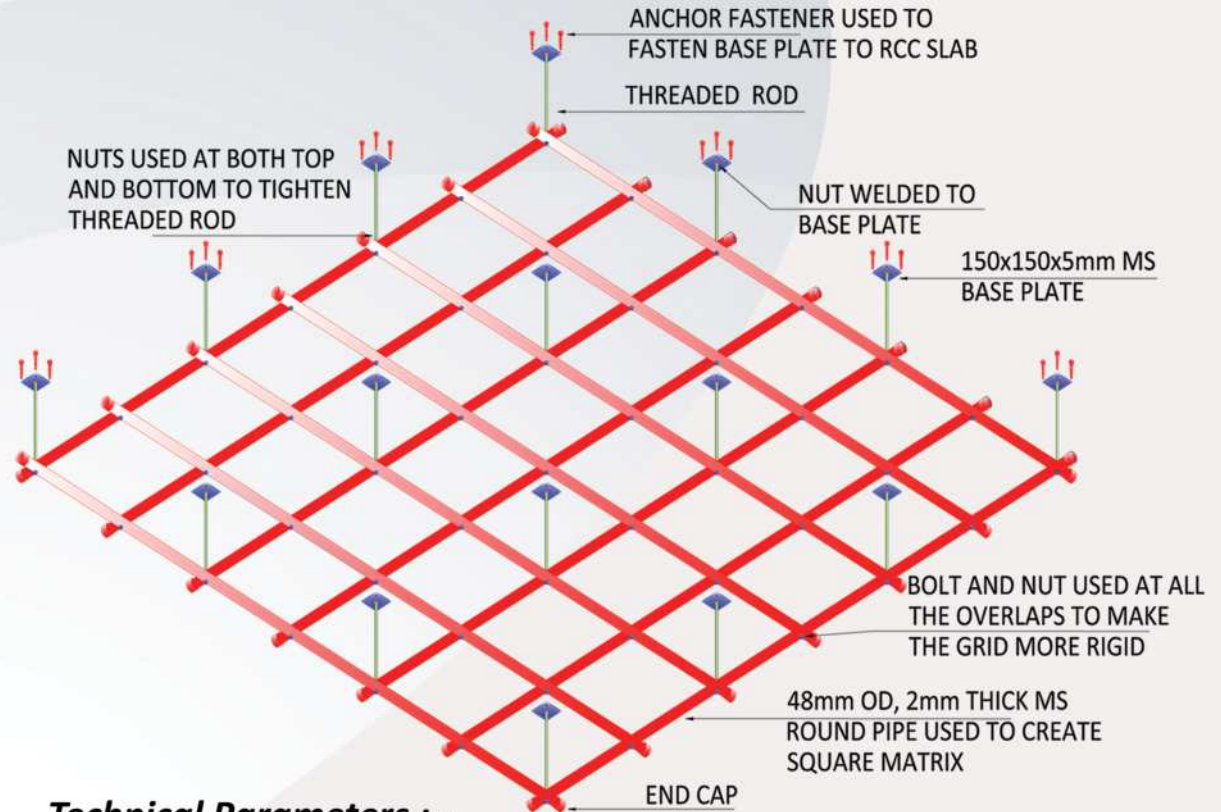
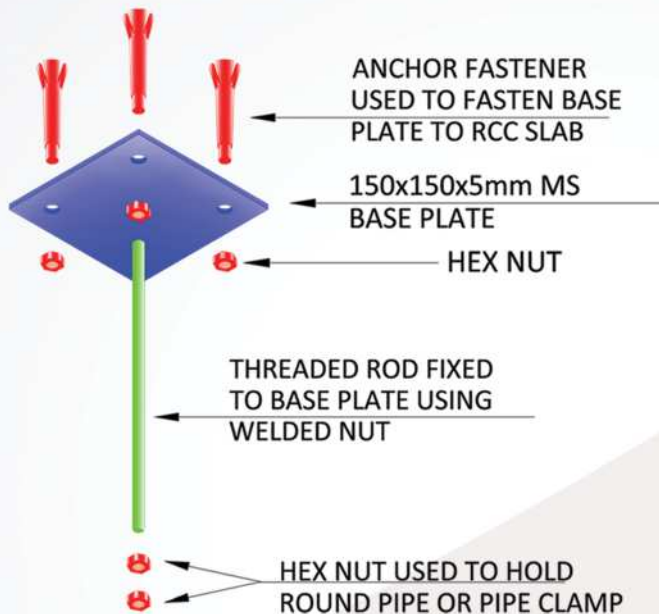
Accessories



WATERPROOF RGB PAR

FIXED PIPE GRID

- Product Code : LK Rig FG - 1
- Material : Mild steel pipe
- Suspension : Through suspenders as per the site conditions
- Dimension : Customised as per the site / project requirement
- Size : 48mm outer dia, 40 nominal bore.

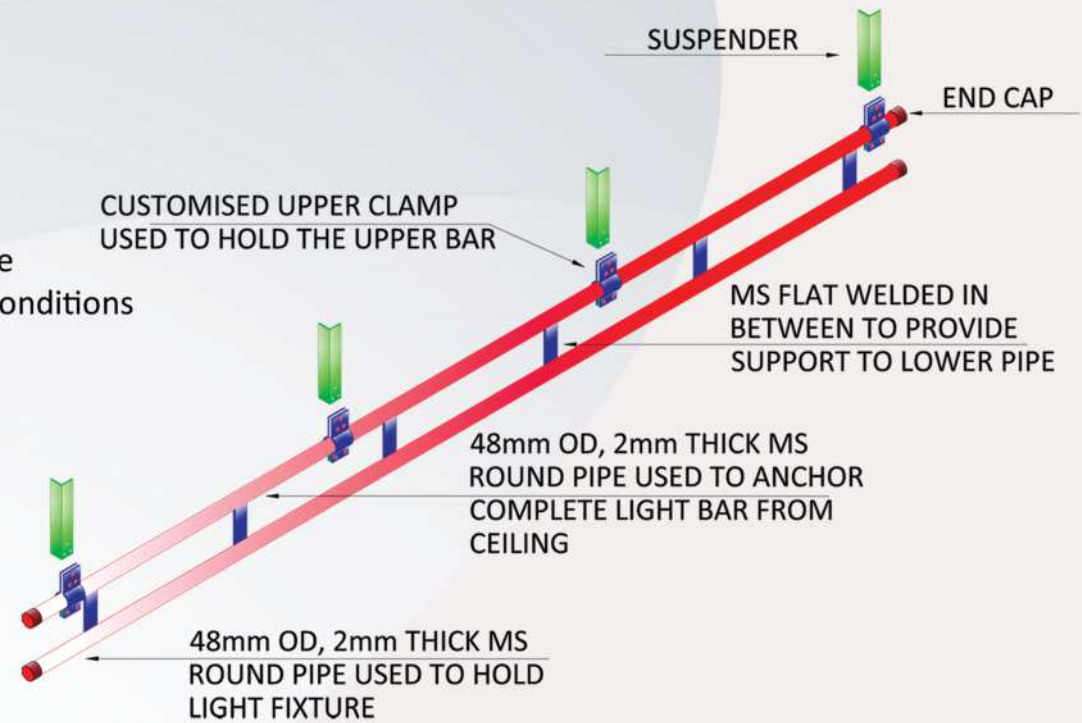
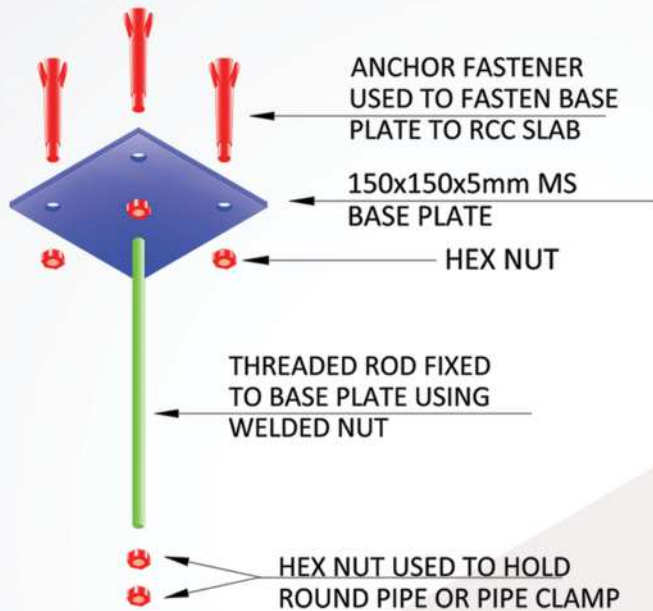


Technical Parameters :-

- Combinations : a) 0.6m x 0.6m 0.8m x 0.8m
b) 1.0m x 1.0m 1.2m x 1.2m
c) 1.5m x 1.5m 2.0m x 2.0m
- Min. Height : 200mm from the ceiling or structure / customised
- Additional : End caps on the pipe ends
- Finish : Powder coated with matt black finish paint

FIXED LIGHTING BAR

- Product Code : LK Rig FLB
- Material : Mild steel pipe
- Size : 48mm outer dia, 40 nominal bore
- Suspension : Through suspenders as per site conditions
- Dimension : Customised as per the site / project requirement
- Size : 48mm outer dia, 40 nominal bore / customised



Technical Parameters :-

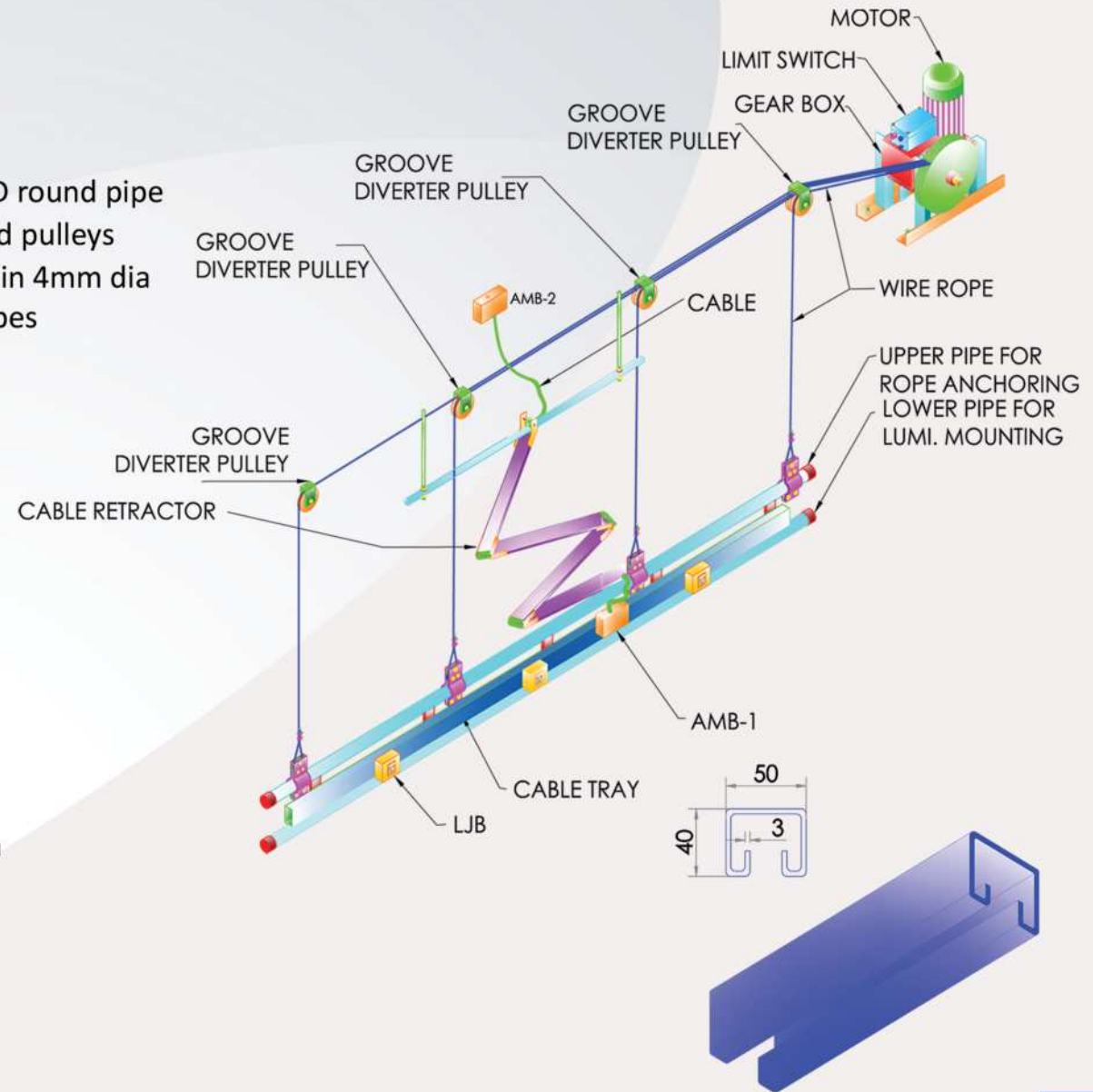
- Finish : Powder coated with matt black finish paint
- Combination : Customized bar length
- Construction : Dual barrel arrangement with dual construction
- Additional : End caps on the pipe end, upper pipe of dual construction is used to anchor the bar with the suspension system and lower pipe is effectively used to hang the light fixtures.

MOTORISED LIGHTING BAR

- Product Code : LK Rig MLB10
- Type : Vertical travelling
- Material : a) Pipe – Mild steel 40NB 48 OD round pipe
b) Pulleys – Mild steel machined pulleys
c) Wire Rope – GI wire ropes min 4mm dia
- Suspension : Bar suspended through wire ropes
- Std. SWL : 180 Kgs (Can be customized as per the project requirement)
- Finish : Powder coated with Matt black texture

Technical Parameters :-

- Combination : 10 ~ 15 mtrs standard length and it will be customized for different lengths
- Additional : Curtain trollies at every 200mm or 250mm along the track with 2 master trollies
- Control : Manual/Opt. DMX Control



TELECLIMBER

Product Code : LK Rig MTCH 2.4

Mechanical :-

Body : Laser Cut MS Sheet Metal
Finish : Powder Coated Matt/ Texture Finish
Color : Black/ Grey/ Blue Powder Coating/Custom
Suspension : 4 x 4mm Steel Wire Ropes
Mounting : Threaded Rod Based Self Balancing Unit
Batten : 48mm OD Class B Type, Powder coated
Length : Custom Batten Length from 1800mm ~ 5000mm

Electrical :-

Power : 0.75HP / 1.0HP / 1.5HP AC Motor, 3 Phase
Input : 3 Phase 415 ~ 440V AC, 50 Hz
DC Brake : Yes, Secondary Safety
Speed : 1440 RPM

Safety: -

SWL : 200 Kgs
Self Weight : 75 Kgs (Excluding Flat Cable Unit)

Movement: -

Max. Travel : 13000 mm (Floor to Top)
Min. Collapse : 1100mm (Grid to Hoist Bottom)
Travel Speed : 4000mm ~ 8000mm Per Min (Custom)



Control: -

Manual/Opt. DMX Control
Wired RCP Control (Actuators)
Optional VFD Speed Variable Drive Control
Optional Remote Control
Optional Hand Held Connect
Optional Wireless Control (Android/ Mac)

Dimensions: -

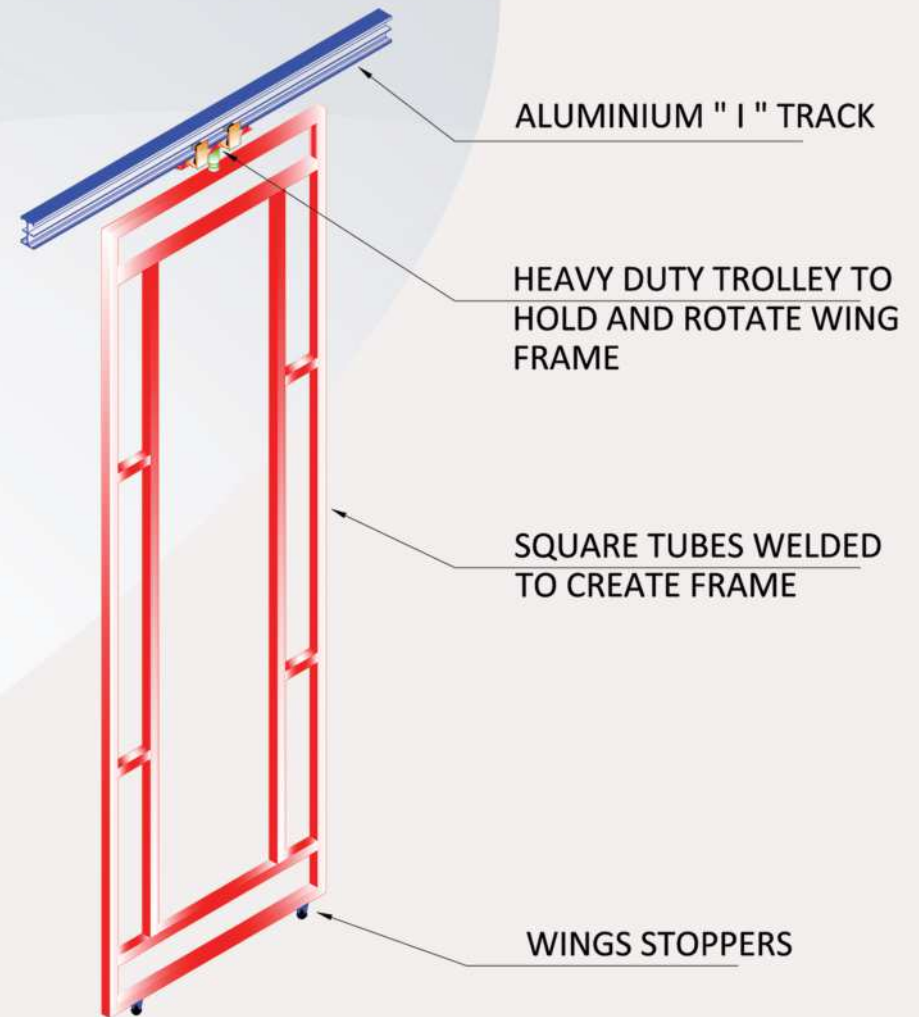
2000mm X 400mm x 382mm

STAGE SIDE WINGS

- Product Code : LK Rig SSW
- Material : Mild steel square pipe
- Size : 25mm outer diameter
- Type : Pivoted or fixed type
- Suspension : Through spud & trolley,
- Finish : Powder coated with matt black finish paint
- Construction : Single or dual construction of pipe as per project design.

Technical Parameters :-

- Combination : Width from 0.8m to 2.5m
- Additional : If pivoted on trolley, wing can be moved along the track or adjusted as required or could be customised as per the site conditions / project requirement.
- Suspension : Track will be a extruded aluminum I profile with Black powder coated finish.

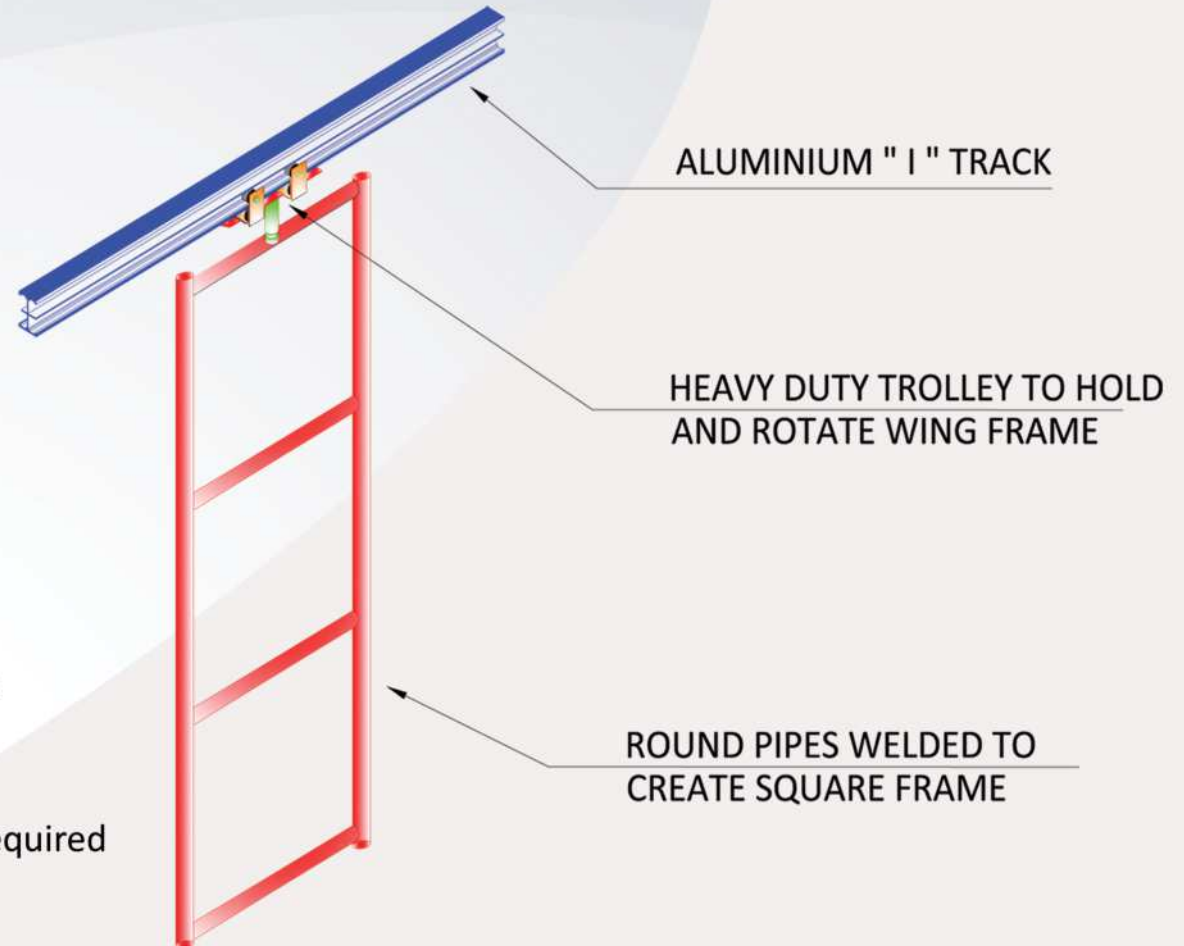


STAGE SIDE LADDER

- Product Code : LK Rig SL
- Type : Pivoted or fixed type
- Suspension : Through spud & trolley,
- Material : Mild steel round pipe
- Size : 48 OD, 40 nominal bore
- Finish : Powder coated with matt black finish paint

Technical Parameters : -

- Combination : 600mm wide with
Height Variable / Custom made sizes
- Construction : Single construction with
cross connecting pipes at every 600mm
or custom made sizes
- Additional : If pivoted on trolley, ladder can be
moved along the track or adjusted as required



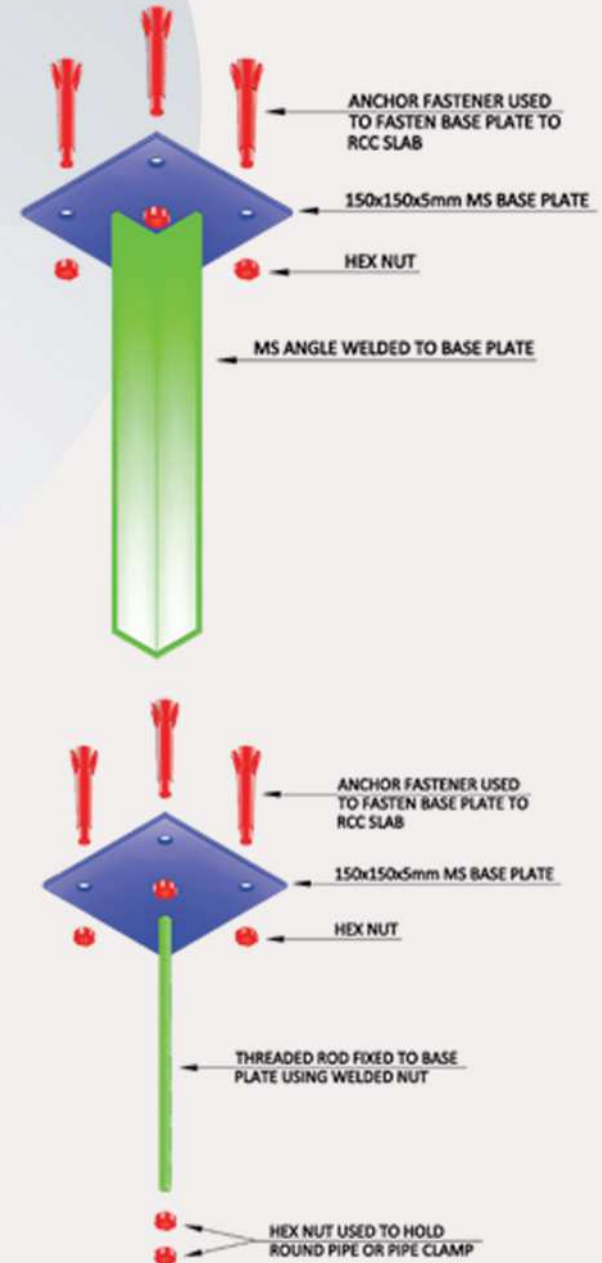
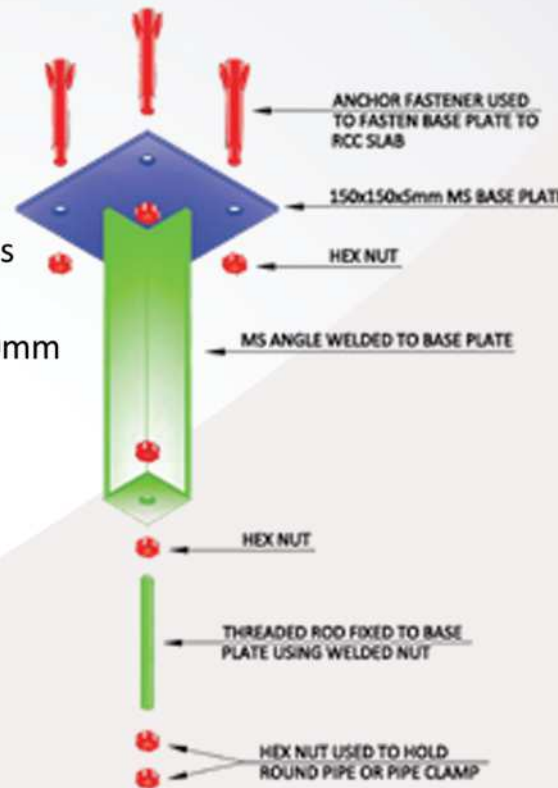
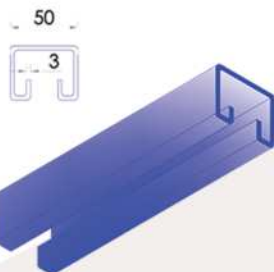
SUSPENDER & C TRACKS

Suspender is a customized product which is designed as per site conditions by considering the roof, ceiling parameters. Supports of suspender is designed by considering safe working load of the system.

- Product Code : LK Rig S1
- Suspension : Through Suspenders as per site conditions
- Material : Mild Steel Hot Rolled Strip

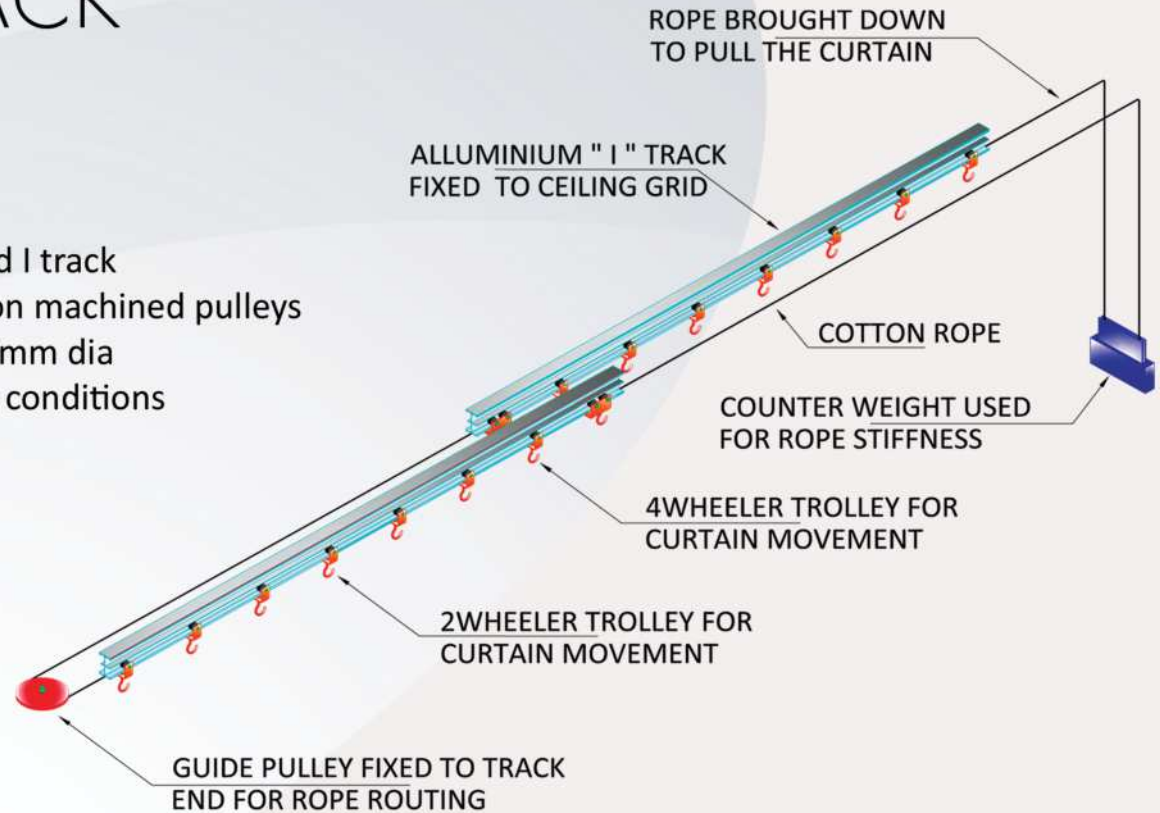
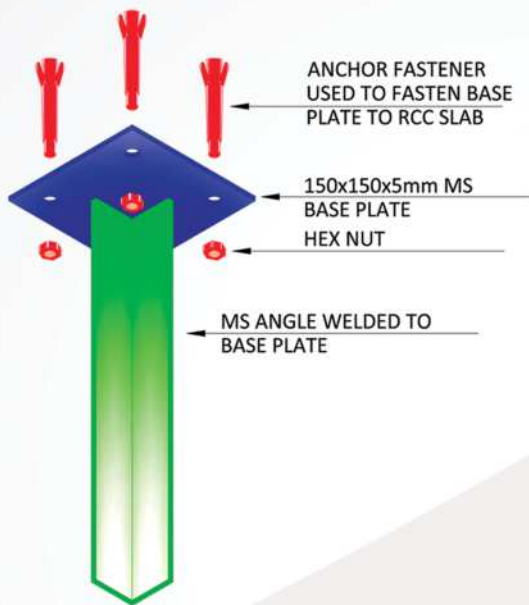
Technical Parameters :-

- Combination : 600mm wide with Height Variable / Custom made sizes
- Construction : Single construction with cross connecting pipes at every 600mm or custom made sizes
- Additional : If pivoted on trolley, ladder can be moved along the track or adjusted as required



MANUAL CURTAIN TRACK

- Product Code : LK Rig Manual CT
- Type : Horizontal type opening
- Material : a) Track – Aluminum extruded I track
b) Pulleys – Mild steel or Nylon machined pulleys
c) Rope – Cotton ropes min 3mm dia
- Suspension : Through suspenders as per site conditions
- Size : As per the site condition and Customer requirement

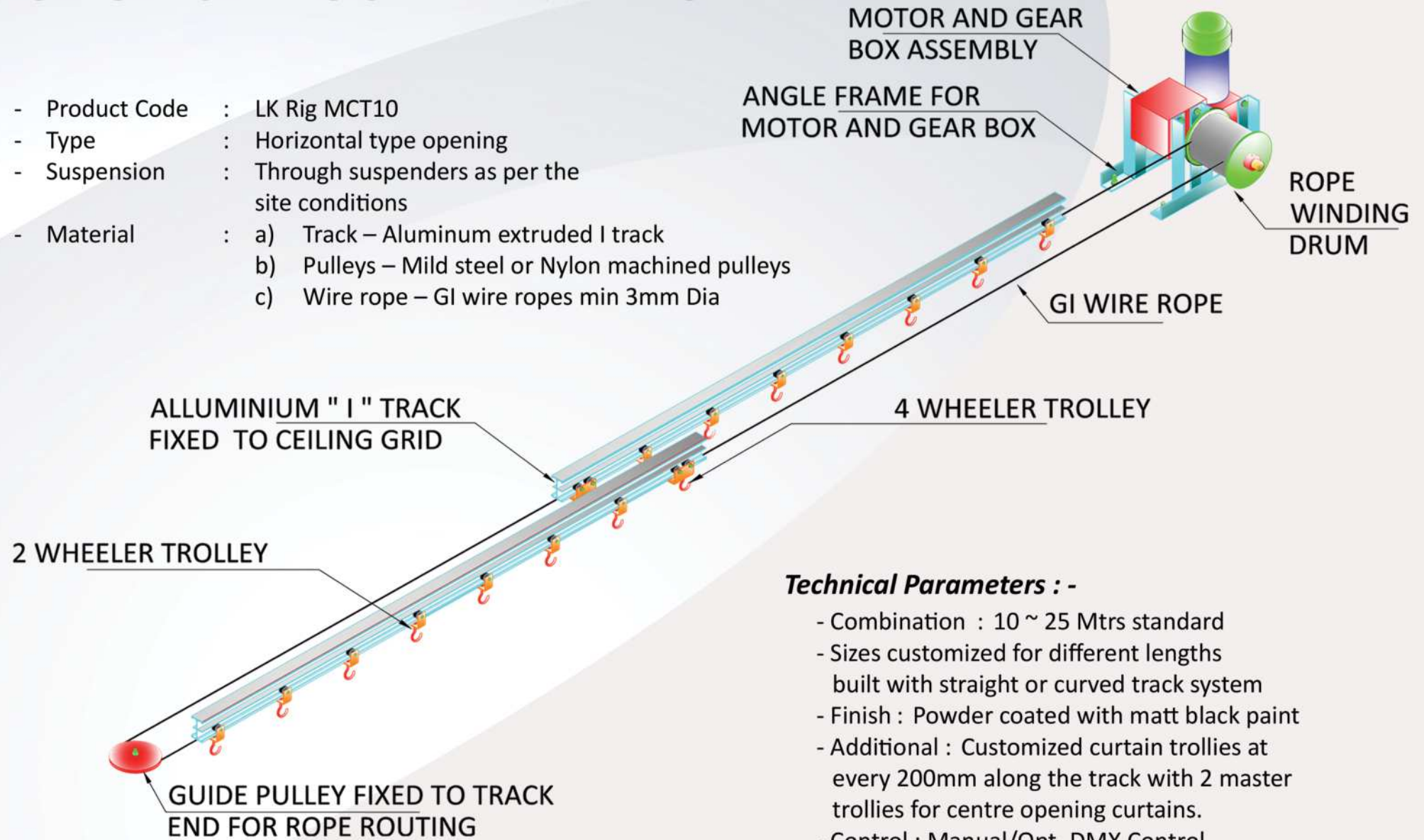


Technical Parameters :-

- Finish : Powder coated with matt black texture
- Combination : 10 ~ 25 mtrs standard length and it will be customized for different lengths
- Additional : Curtain trollies at every 200mm or 250mm along the track with 2 master trollies

MOTORISED CURTAIN TRACK

- Product Code : LK Rig MCT10
- Type : Horizontal type opening
- Suspension : Through suspenders as per the site conditions
- Material :
 - a) Track – Aluminum extruded I track
 - b) Pulleys – Mild steel or Nylon machined pulleys
 - c) Wire rope – GI wire ropes min 3mm Dia



Technical Parameters :-

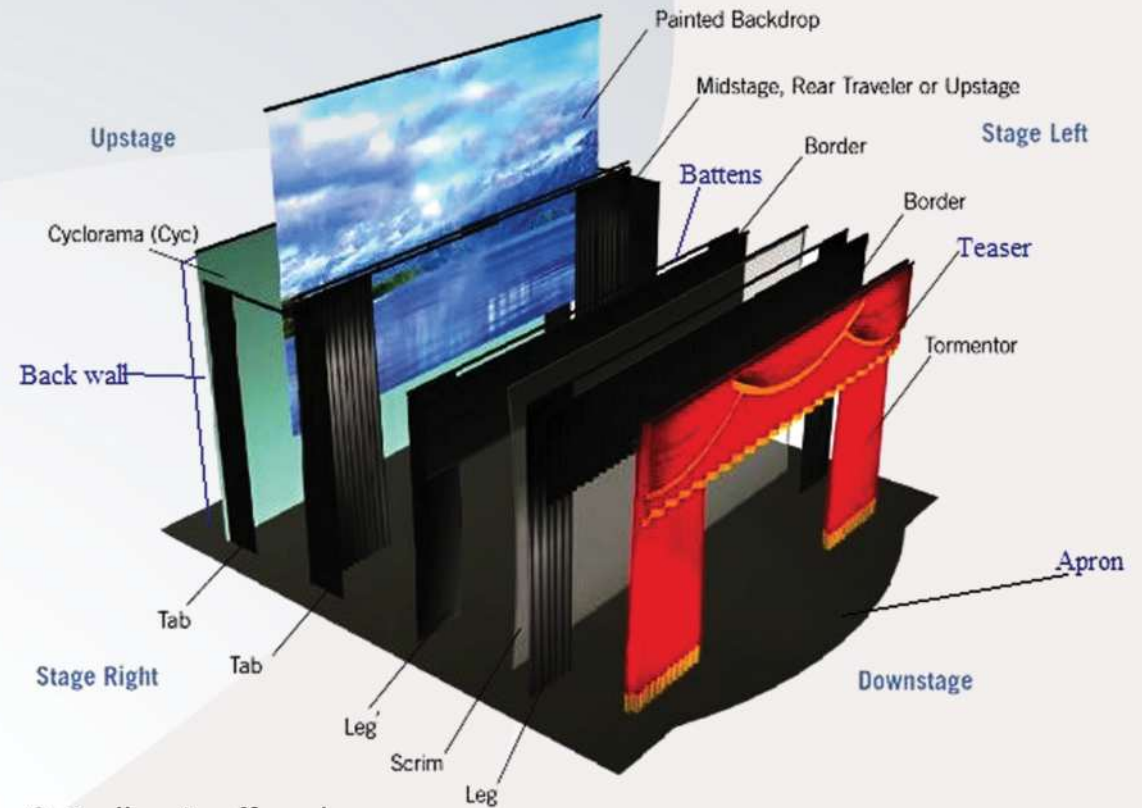
- Combination : 10 ~ 25 Mtrs standard
- Sizes customized for different lengths built with straight or curved track system
- Finish : Powder coated with matt black paint
- Additional : Customized curtain trolleys at every 200mm along the track with 2 master trolleys for centre opening curtains.
- Control : Manual/Opt. DMX Control

DRAPERY

Valance or Scallop are the beautifying cloth arrangement at the front of Stage just before the Apron area.

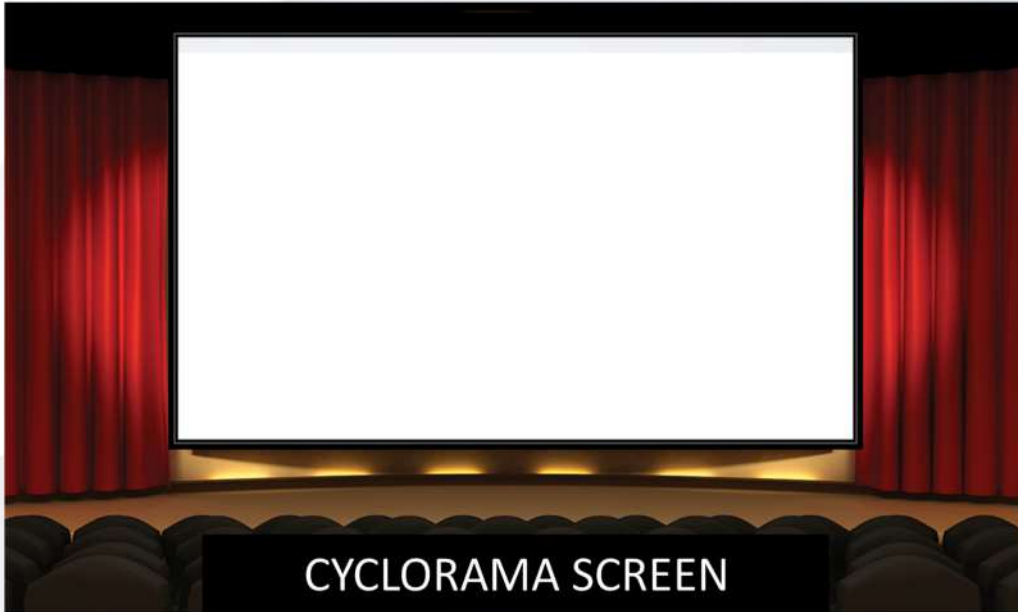
Straight cloth finish at the bottom of the fabric is named Valance and Half circled finish at the bottom is named as Scallop of Main Frill. These are extensively used for theatre stage systems to have a grand look to the stage and to hide lighting bars from audience view.

- Product Code : LK Rig FB (S,V,F) - Fixed
LK Rig MB (S,V,F) - Motorized

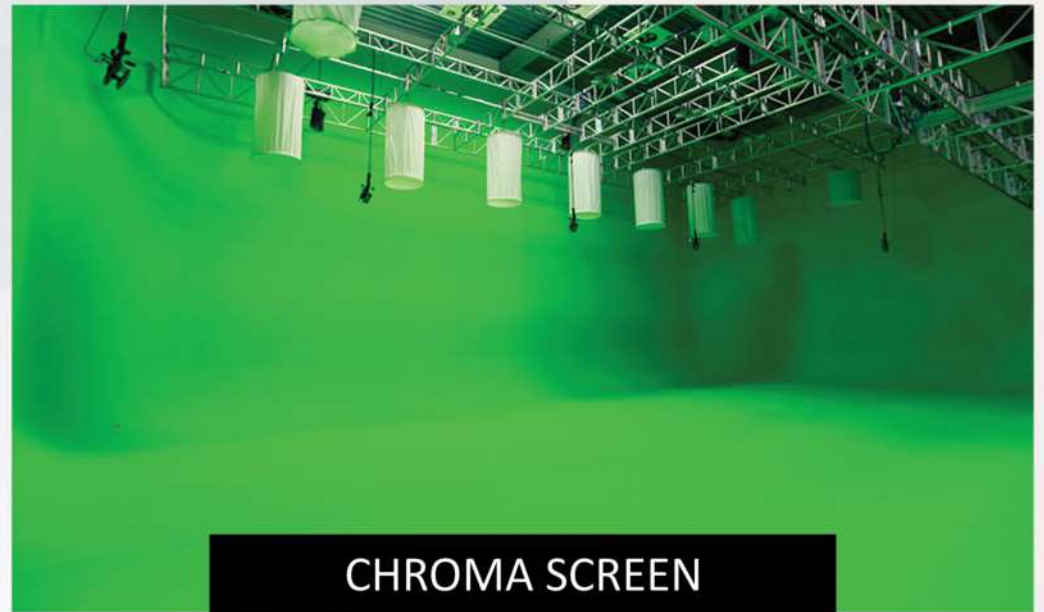


Technical Parameters :-

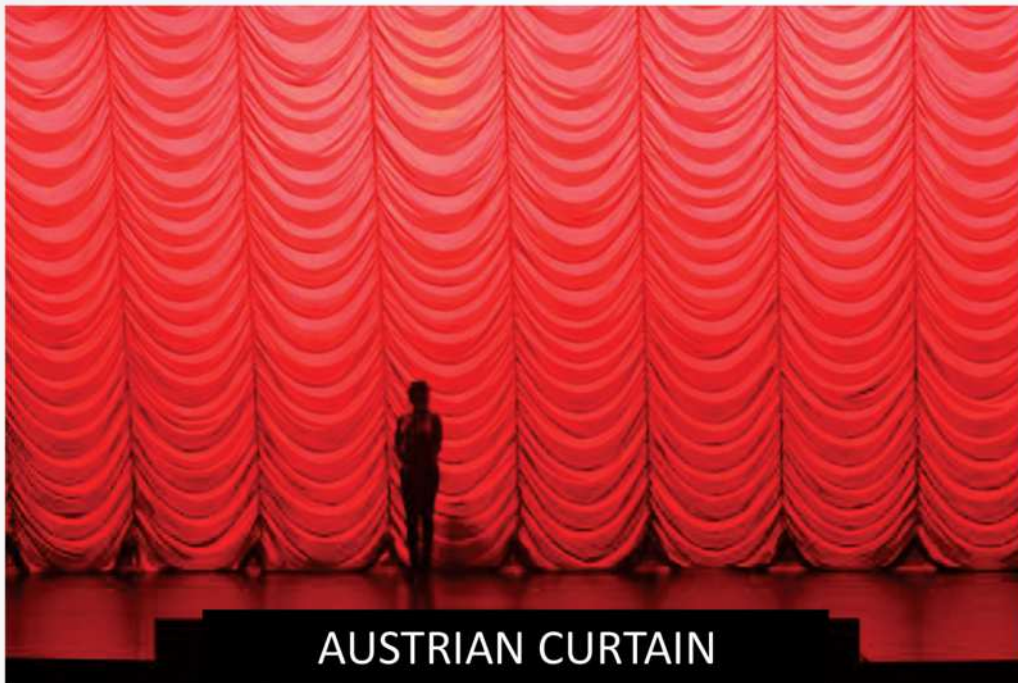
- Generally Valance is offered with 100% minimum gathering & Scallop is offered with 300% minimum gathering.
- Cloth of the valance can be fixed to any of the rigs either fixed or motorized based on usage of the theatre stage system.
- Cloth for valance is generally made with Velvet finish fabric having a minimum GSM of 250.
- Color for the cloth depends upon the architecture of the auditorium.
- Generally Valance/ Scallop are colored similar to Grand drape or Main curtain.



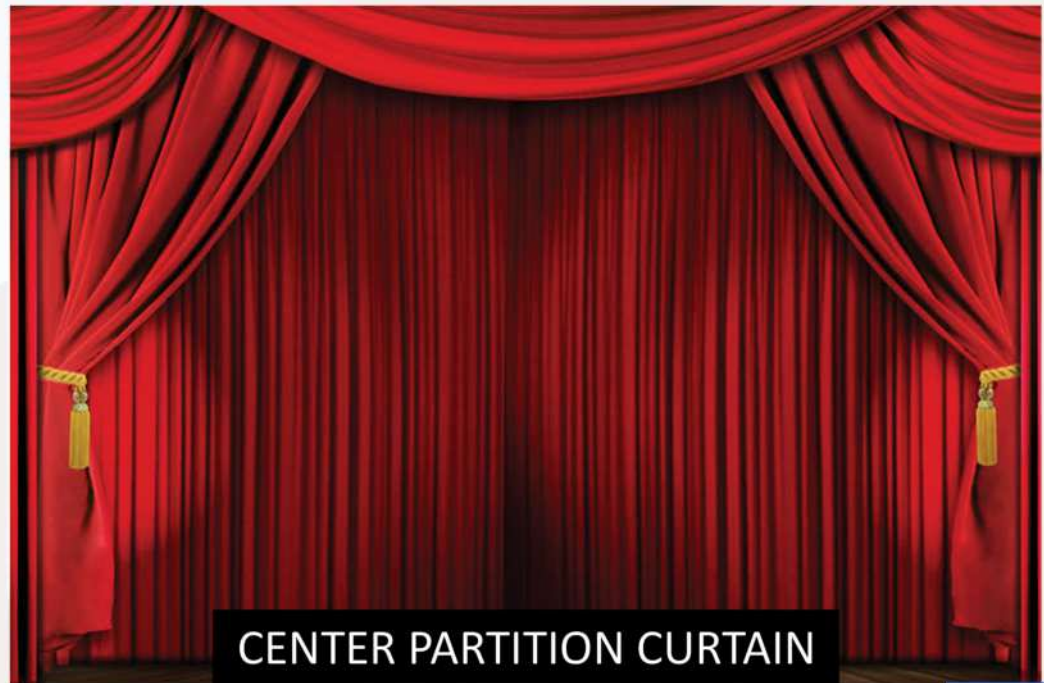
CYCLORAMA SCREEN



CHROMA SCREEN



AUSTRIAN CURTAIN



CENTER PARTITION CURTAIN

STANDS, CLAMPS & GRIPS



C-STAND



STD-1



GROUND
BASE STAND



SPUD



ARM & FLAG CLAMP



C - CLAMP



SAFETY BOND



MANUAL
PANTOGRAPH



MOTORIZED
PANTOGRAPH



O CLAMP

NETWORK CONTROLLERS

LIGHTS



SPLITTERS, JB's, AMB & PMB



CEE JUNCTION BOX



4 WAY IEC JUNCTION BOX



DMX JUNCTION BOX



SPLITTER



DMX LOOP BOX



AMB



PMB

PANELS



POWER DISTRIBUTION PANEL



REMOTE CONTROL PANEL



INCOMER



MOTOR CONTROL PANEL



PATCH PANEL

Notes





Manufacturing Unit

LEKSA LIGHTING TECHNOLOGIES PVT LTD

 Ashwathpura Road, Moodbidri, Mangaluru, Karnataka, India – 574227

 +91 - 789 9543210

 www.leksalighting.com

 info@leksalighting.com

Regional Offices

Mumbai, Delhi, Kolkata, Bangalore & Hyderabad

Gujarat, Madhya Pradesh, Punjab, Rajasthan,

Uttarakhand, Bhubaneswar, Assam, Bihar, Tamil Nadu

We are spread across India and present in **20+** countries



A PROFESSIONAL LIGHTING MANUFACTURER